

PROJEKTA IZSTRĀDES SKICES

Ēkas rekonstrukcija

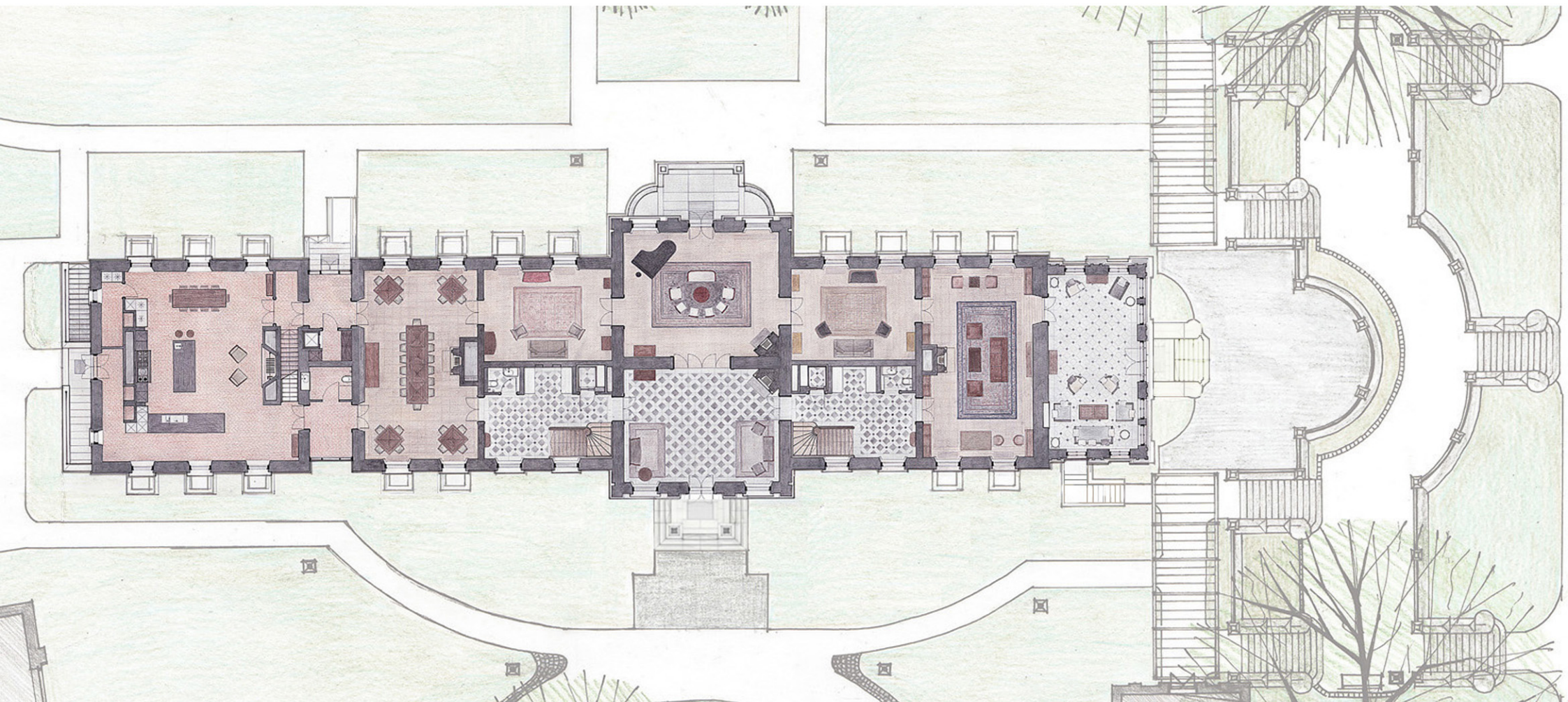
Kandavas novads, Rūmene

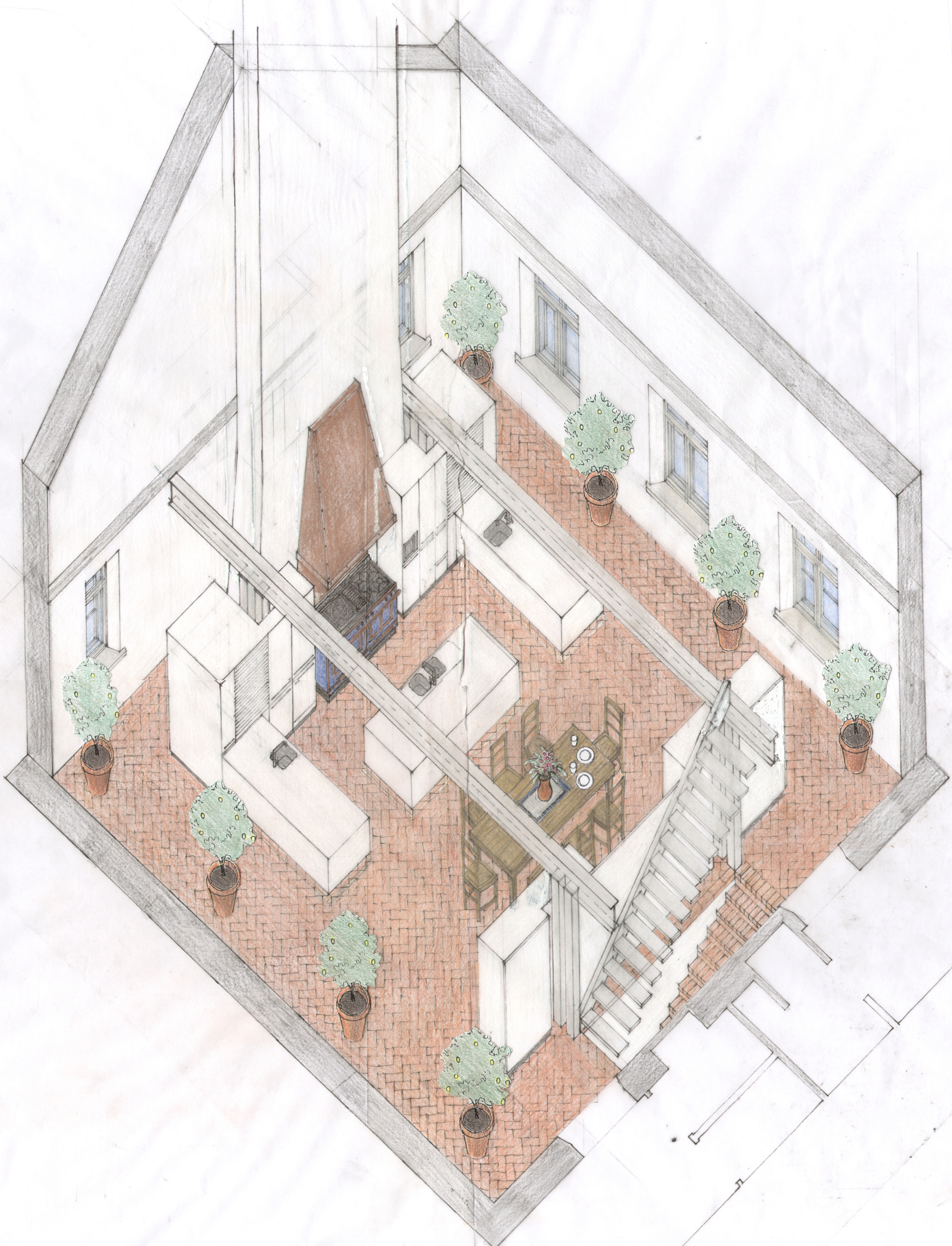
Arhitekti: Zaiga Gaile, Līga Apine, Zane Dzintara, Ineta Solzemniece, Agnese Sirmā

Pasūtītājs: SIA Hotel Bergs

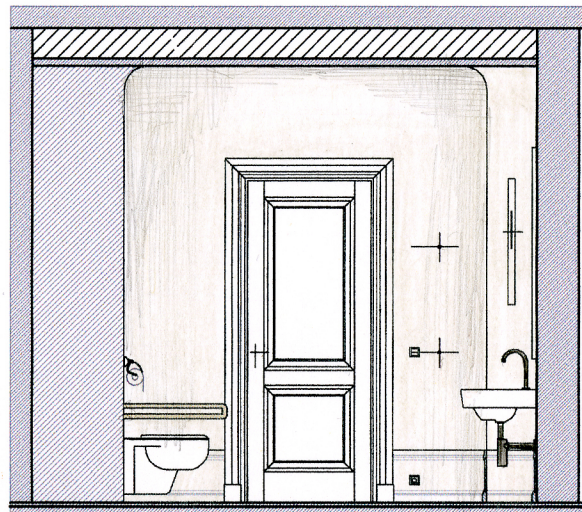
Projekts: 2004-2008, Būvniecība: 2005-2009

<http://www.zgb.lv/lv/arhitektura/9/35/Rumenes-muizas-kungu-maja/>

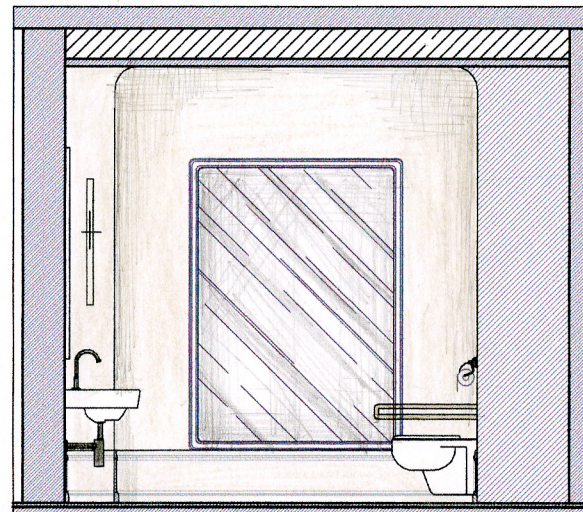




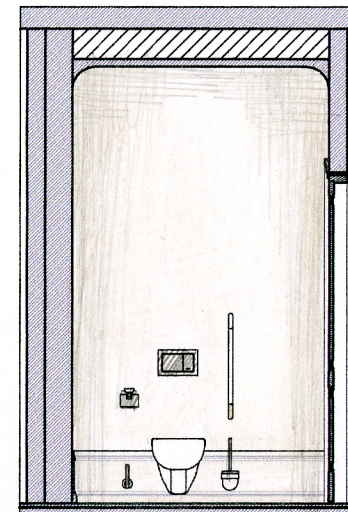
Skats C-C



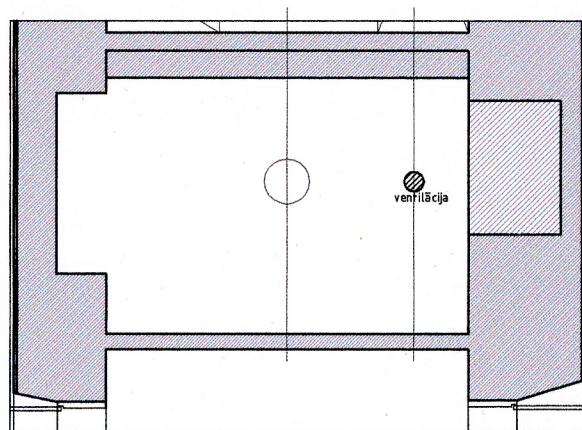
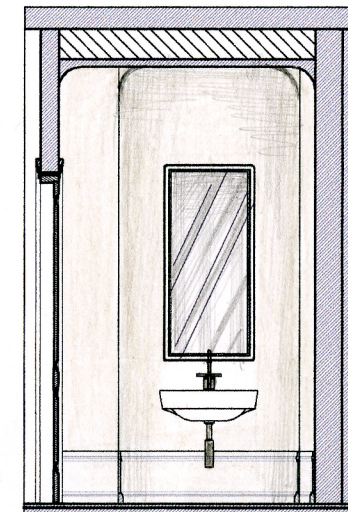
Skats B-B



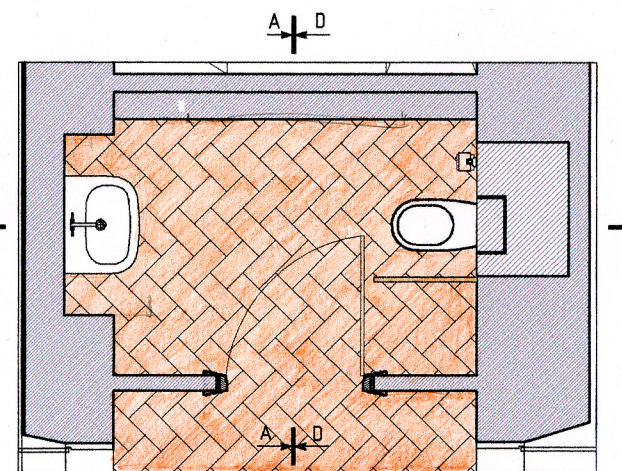
Skats A-A



Skats D-D



Vannas istabas griestu plāns

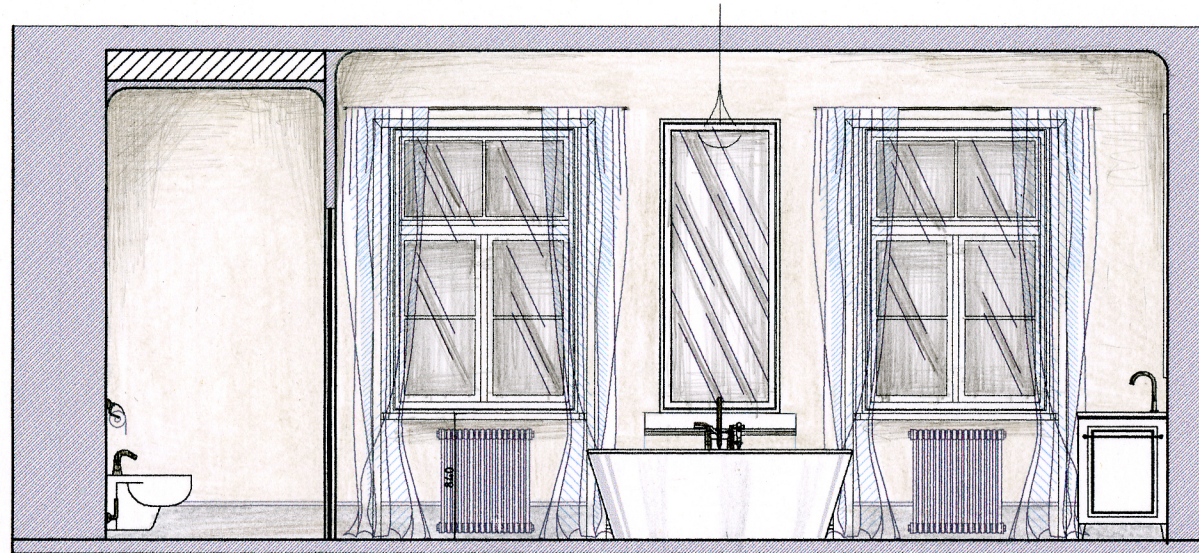


Vannas istabas plāns

1. stāva vannas istaba; telpa nr. 1.16

Telpas platība: 4,4 m²
M 1:50

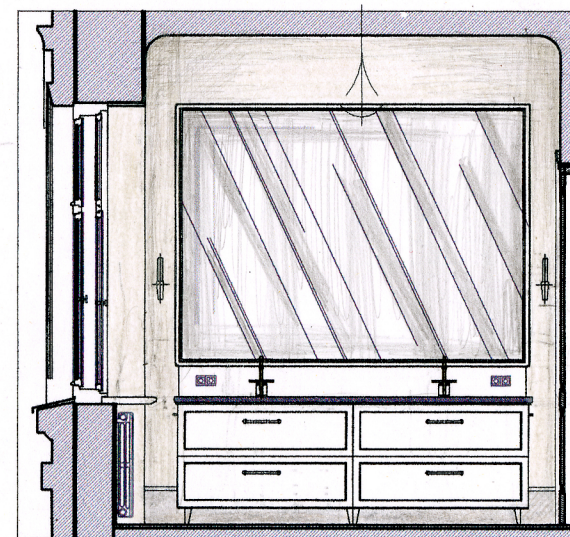
Skats B-B



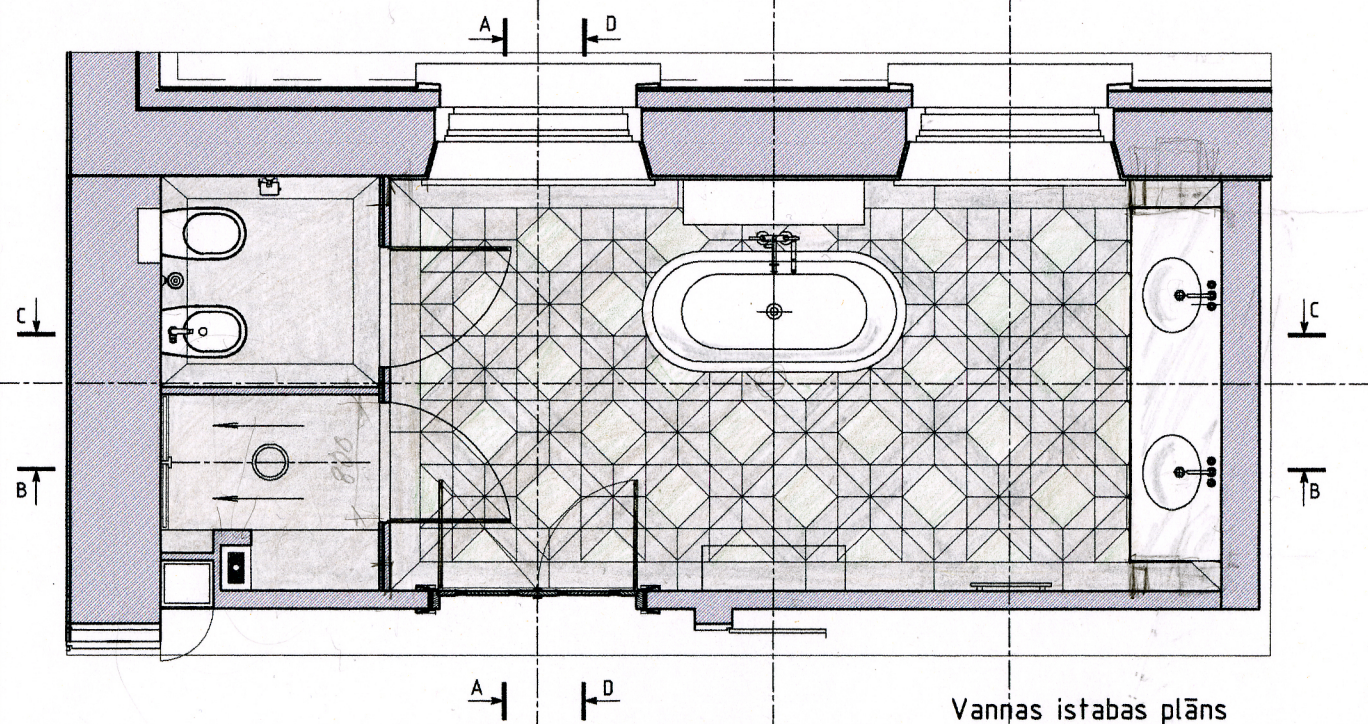
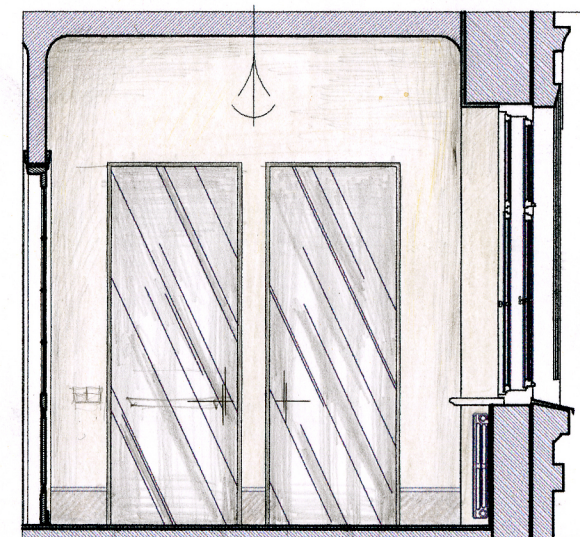
Skats C-C



Skats A-A



Skats D-D

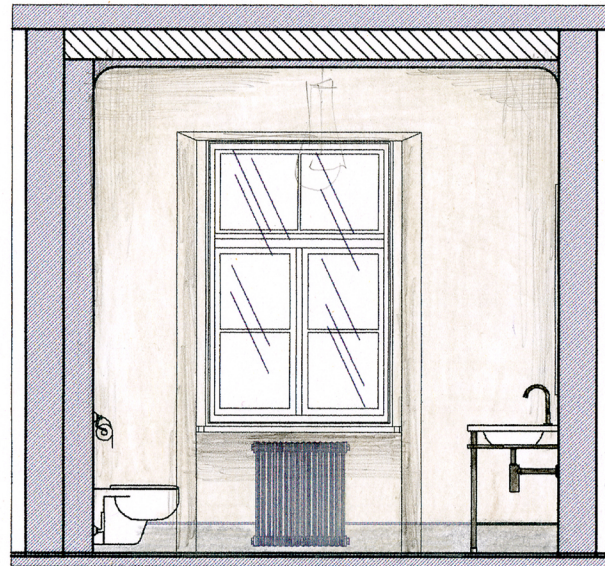


Vannas istabas plāns

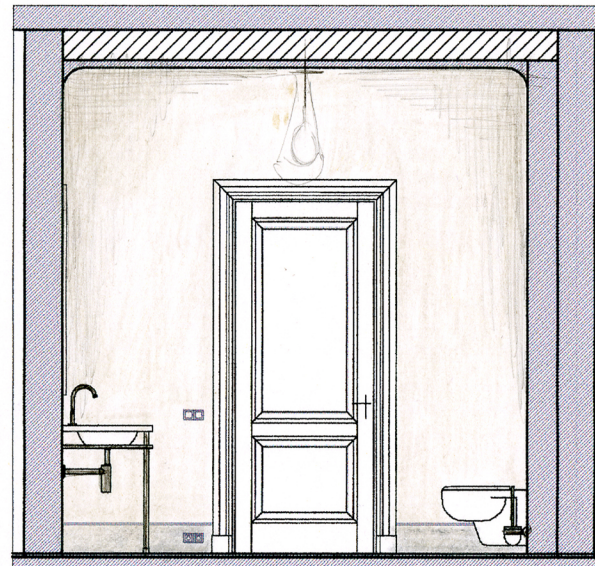
2. stāva vannas istaba; telpa nr. 2.6

Telpas platība: 19.3 m²
M 1:50

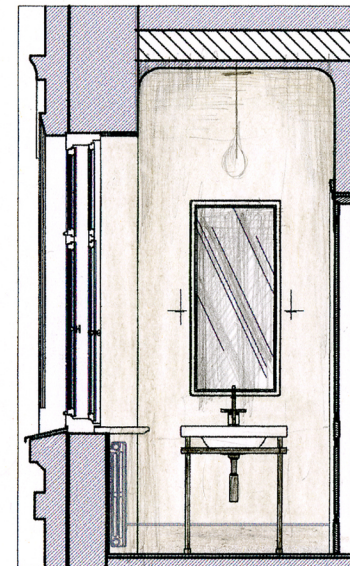
Skats C-C



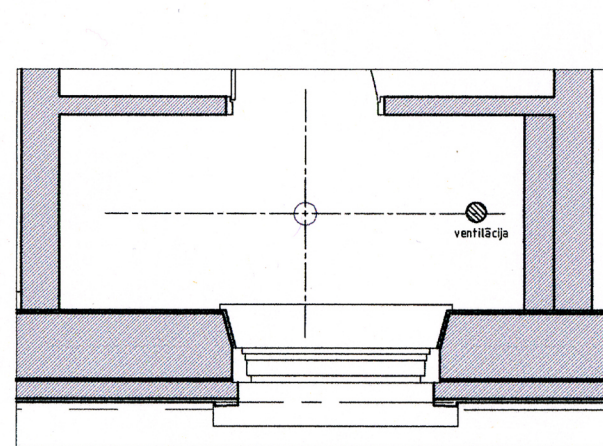
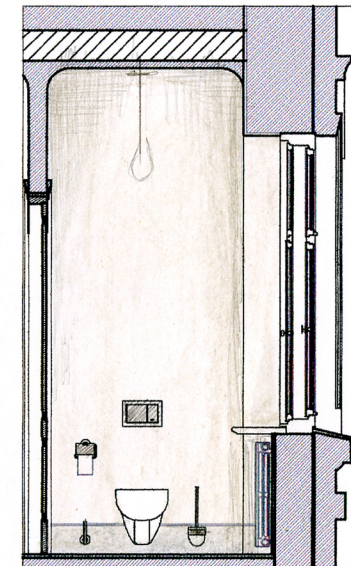
Skats B-B



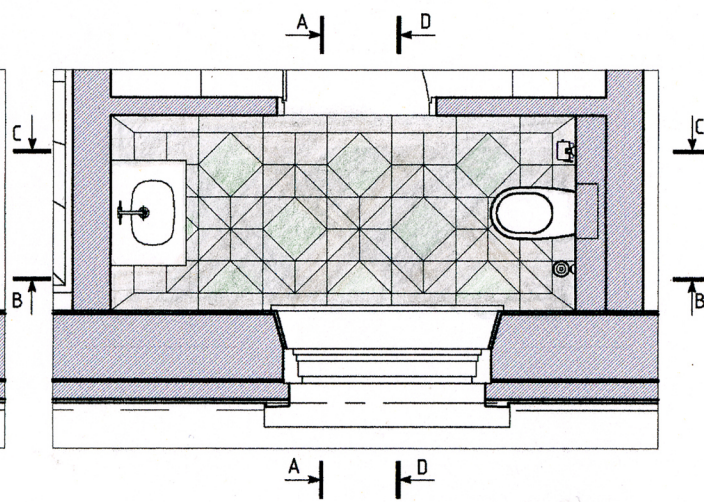
Skats D-D



Skats A-A



Vannas istabas griestu plāns



Vannas istabas plāns

2. stāva vannas istaba; telpa nr. 2.8

Telpas platība: 4,0 m²
M 1:50