

interior architecture / concept
CO-WORKING SPACE

JAUNĀ
TEIKA



R i g a, R o p a z u s t r e e t 1 0

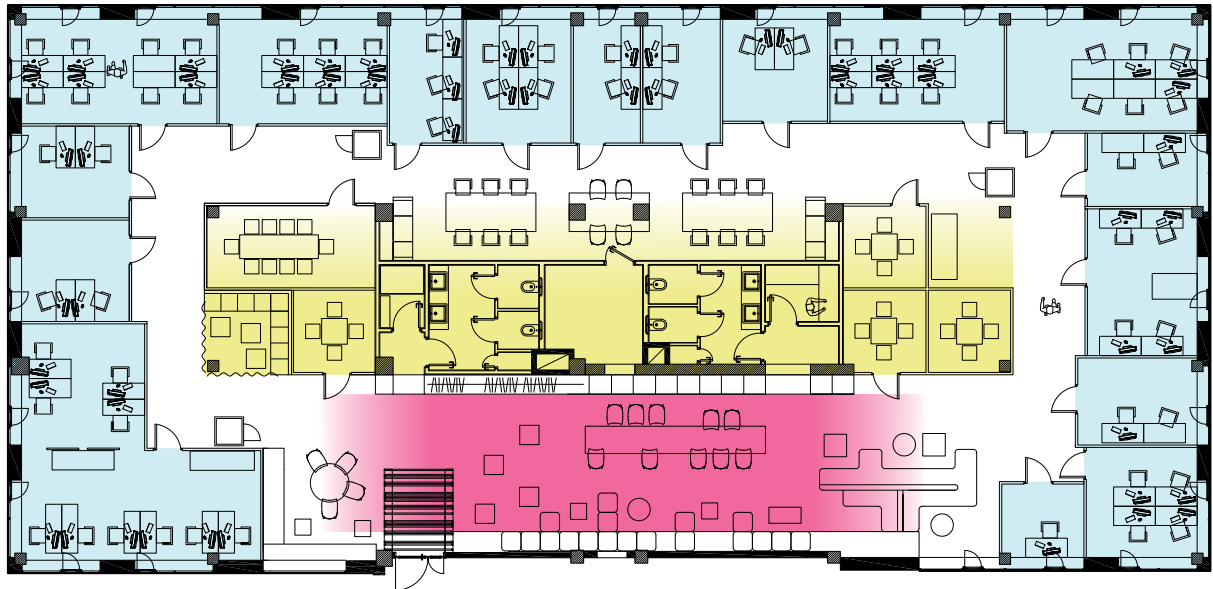
City within city. Your part of the city. You're part of the city.

* reference: /AA School of Architecture by Graham Stephen Ives Baldwin/



Without the city there would not be Teika district.
Without Teika district there would not be
"JAUNĀ TEIKA". All are result of the city. The city
becomes a starting point of co-working concept also.
The city comes into a co-working space with all the urban
environment specific functions and structure.

To make the concept of visual, tactile, we will use the materials, techniques, and principles that are used in urban design and architecture.



CENTER CORE

The central core space is much more detailed, a variety of compatible materials interact, overlap, accents, or works as a background for other materials.

PUBLIC

The background represents the hemispherical town facade, changing views. All glazed facades volume is conceptually monolithic, the different levels of the glass walls creates a large-scale texture that will make the picture more interesting.



BACKGROUND

LEGENDS

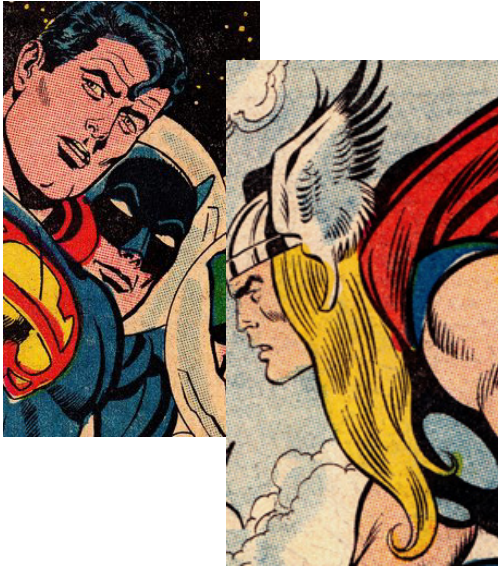
CITY PRINTS

PARK IN A CITY

COURTYARD

We divided the conceptual structure of the city into five sub-sections. Each of them has a individual role /visual appearance.

City streets are full of legends - historical, fictional and real - every one of us can be a legend, like Walter Caps, who is one of the legends in Jaunā Teika concept. Co-working also has created its own hero, who embodies the ambition, energetic and bright.



LEGENDS

**We'll create our own character
/ LEGEND /
make him visual / graphic
create our own pattern
which suits Jaunā Teika concept CITY**





**all communications
on concrete ceiling - white**



colorful glass wall frames



**storages as background for
directions/signs/information**



You travel around the city and to your sight slips past the facades of buildings, court yards, and advertising poles. They come together and make up the image of a city – co-working office cabinets are like this converged urban background that does not stand out, but becomes a main part of city.



corridor floor - asphalt

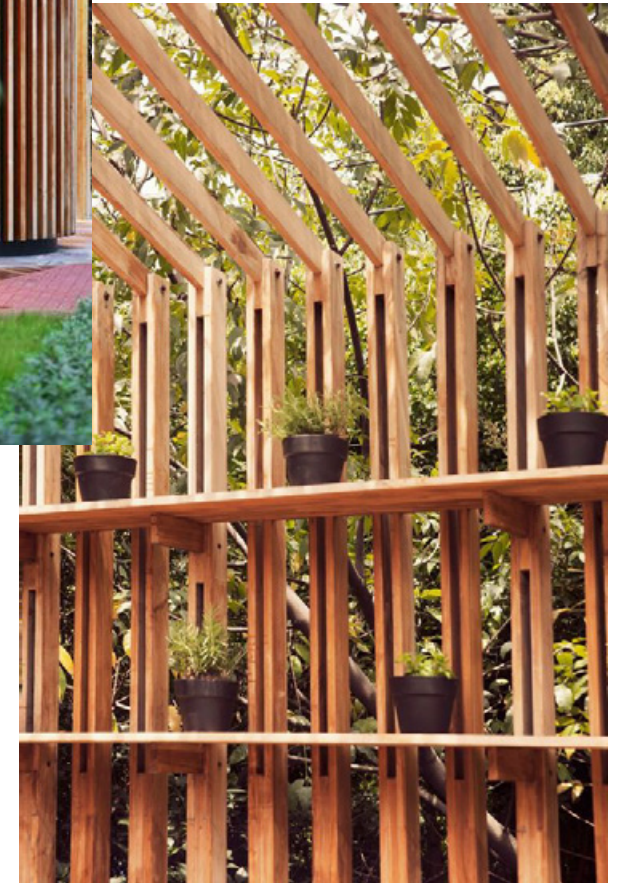
BACKGROUND

PARK IN A CITY

Man is sitting on a bench in a park. In unhurriedly and frame manner. Urban noises echoed in the distance. You are sitting in a park and breathe in a nature – the park view in co-working space enters as real herbs/plants/greens, which becomes not only as generator of oxygen, but also a finish for walls and ceiling.



green plants



You sit in enclosed courtyard and at the same time are both - part of the city and you are escaped from it - "dark room" in co-working is like a court yard in city, which is bounded by opaque walls and confidentiality.

COURTYARD



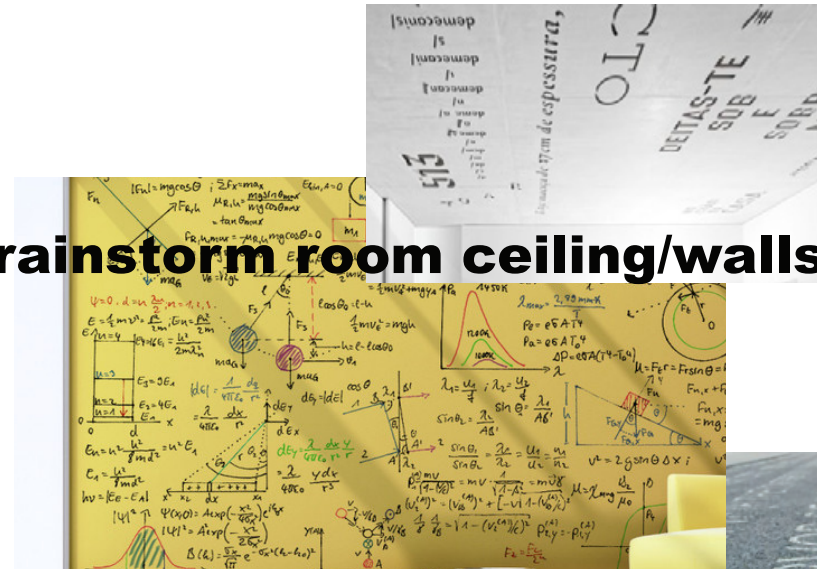
CITY PRINTS

With crayons marked sidewalks, walls of buildings and fences - usual city view, which transforms into the interior like a monolith finishing material that covers planes of the space - the floor, walls and ceiling. All the planes become a surface for your notes - ideas, sketches and plans.



walls/storage facades as NOTES

brainstorm room ceiling/walls/floor





* reference: /Hotel Fouquet Barrière by Edouard François/

new ways to represent the **FACADES OF STREET**



* reference: /by mansilla y tuñón



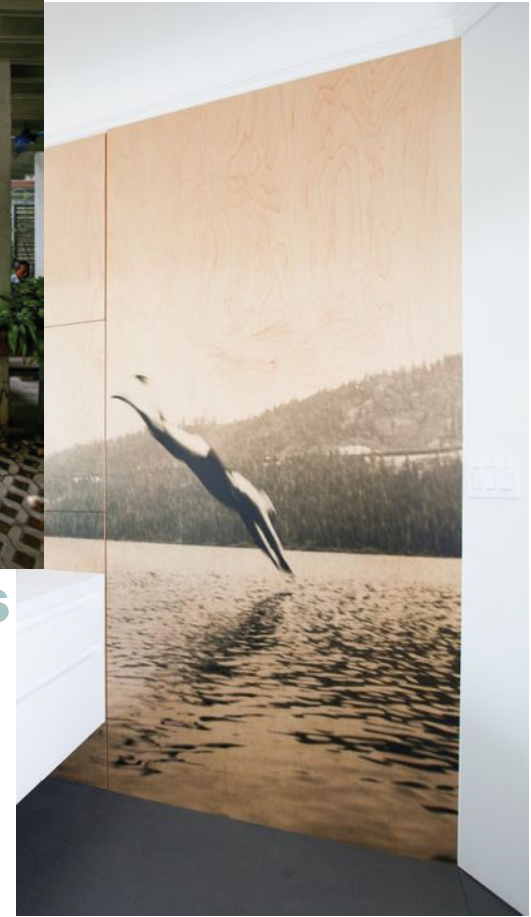
corridor floor - asphalt



unusual materials



green plants



simple materials - great effect



* reference: /OMA for knoll at prada presentation/



create you own view of city

Thank you for your attention!

annvil

interior architecture

www.annvil.lv

Anna Butele

anna@annvil.lv +371 29662733